

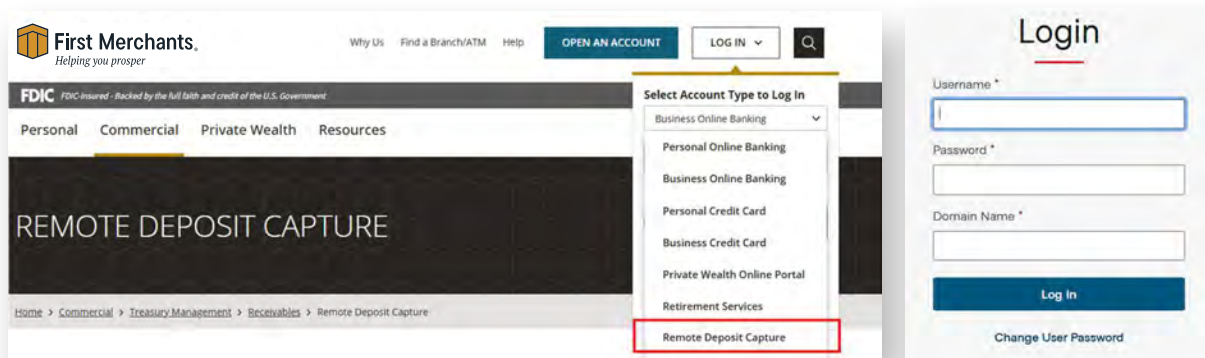
Remote Deposit Capture Scanner Bundle Install Guide

Please follow these instructions prior to your first deposit. If you are transferring your RDC service and keeping your current scanner, you must uninstall the existing drivers and install the new drivers using the instructions in this guide

Logging In

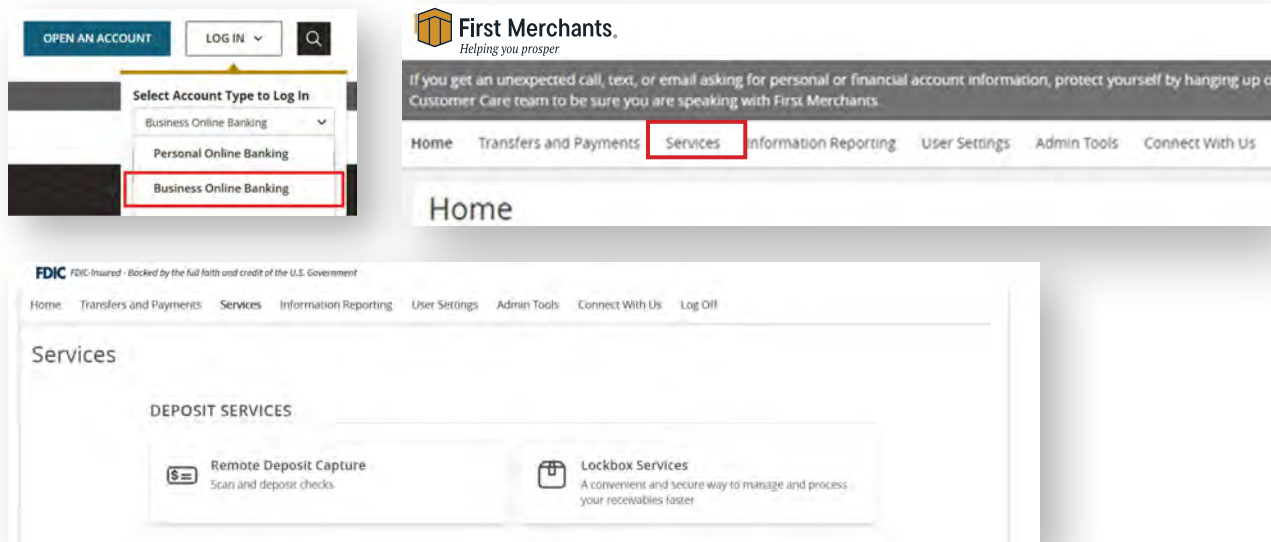
First Merchants Website (RDC-Only Users) When prompted, enter Username, Password and Domain Name (the Domain Name could also be a 5 digit number). Click Sign In. You will be prompted to change password at first login.

1. Go to Firstmerchants.com.
2. Select Log in.
3. Choose your Account Type>Remote Deposit Capture.
4. Enter your Username, Password and Domain



First Merchants Online Banking (Online Banking & RDC Users)

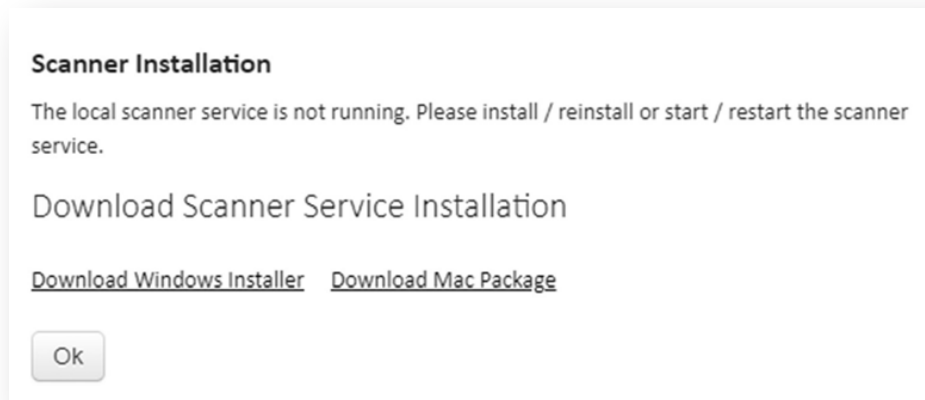
1. Log in to your Online Banking.
2. Using the top navigation, click on Services.
3. On the Services page, select the Remote Deposit Capture Tile.



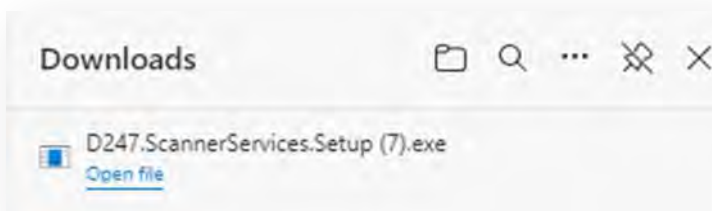
Remote Deposit Capture Scanner Bundle Install Guide

The following steps depict a Windows installation. Do not plug the scanner into your computer until the drivers have been successfully installed (Step 15). For the Mac package, follow the steps in that [guide](#).

1. Click on the Windows Installation link in the pop up.

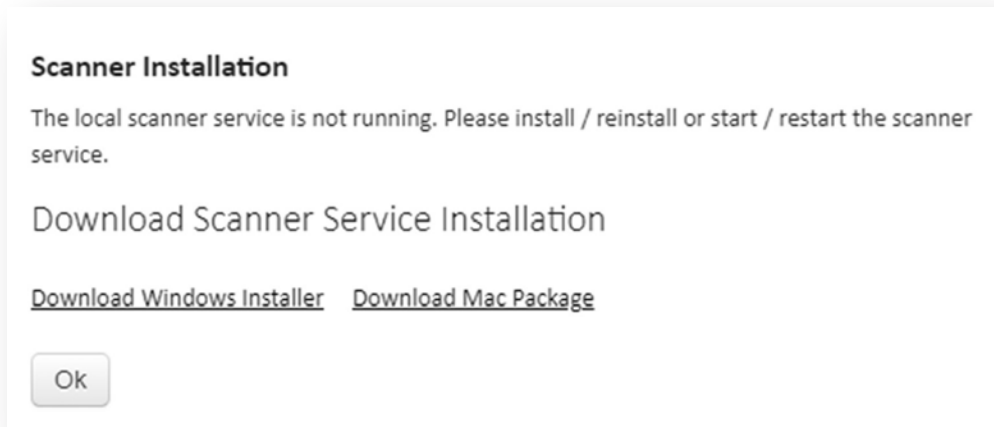


2. Open the file from downloads.



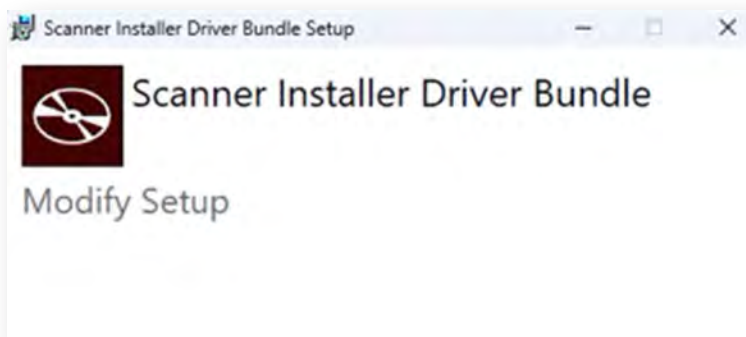
Remote Deposit Capture Scanner Bundle Install Guide

3. Click on the Windows option.



NOTE: For Mac Remote Deposit Capture workstations, select Download Mac Package and follow the prompts.

4. Open the file from downloads.
5. Select Install.



6. Follow the prompts until completed.
7. Once install is complete, select "ok"
8. Enter activation key
9. Log back in
10. Select Admin tab > Scanner installation > Select scanner type > download (follow prompts)
11. Once Scanner driver installation is complete, restart computer
12. Plug scanner in once computer fully rebooted
13. Log back in, service is ready!



First Merchants
Helping you prosper

